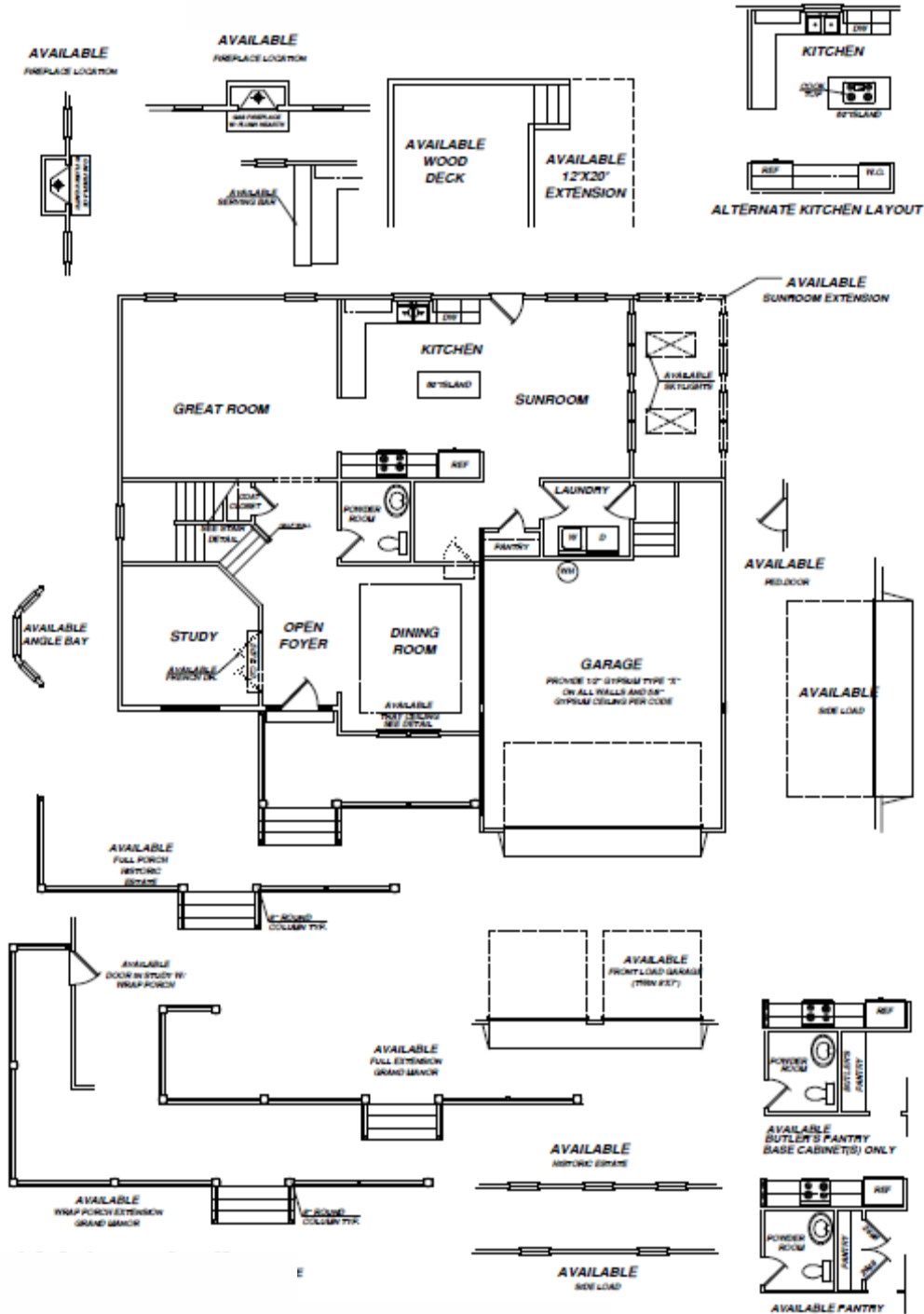


# The Wadsworth I

- 2816 – 3465 square feet
- 4-5 bedrooms
- 2 1/2–4 1/2 baths

## First Floor Plan



# The Wadsworth I

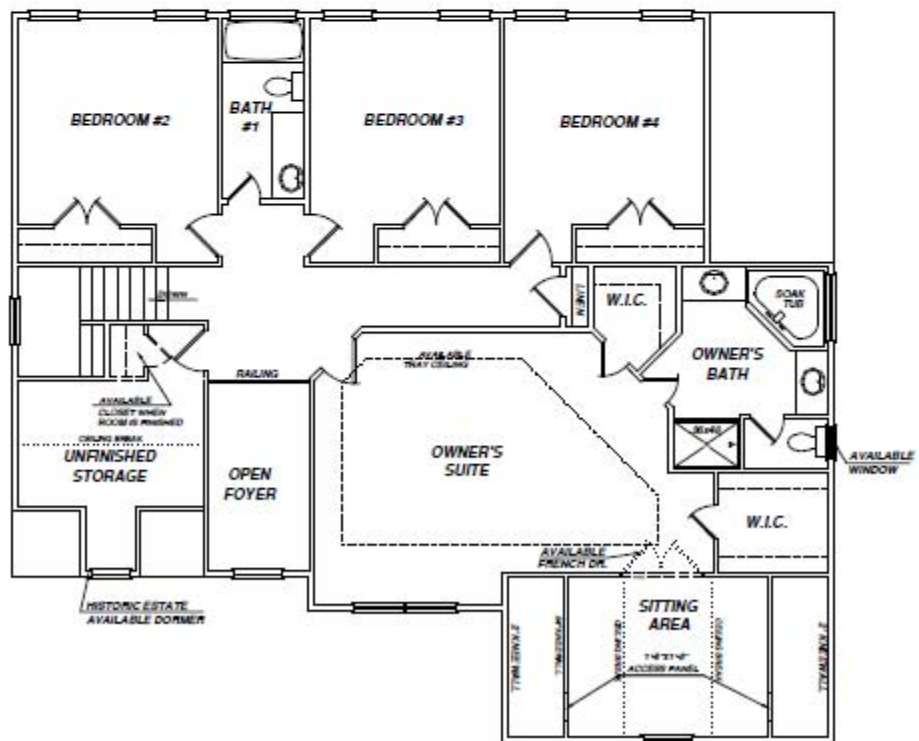
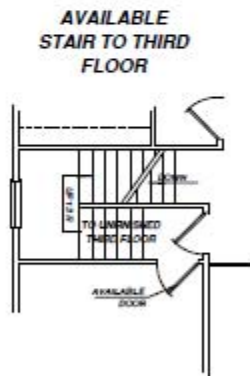
- 2816 – 3465 square feet
- 4-5 bedrooms
- 2 1/2–4 1/2 baths

## Second Floor Plan

AVAILABLE EXTENDED 4TH BEDROOM WITH 2ND FULL BATH



THIS PLAN WILL REQUIRE AN EXPANDED SUNROOM WITHOUT THE AVAILABLE SKYLIGHT

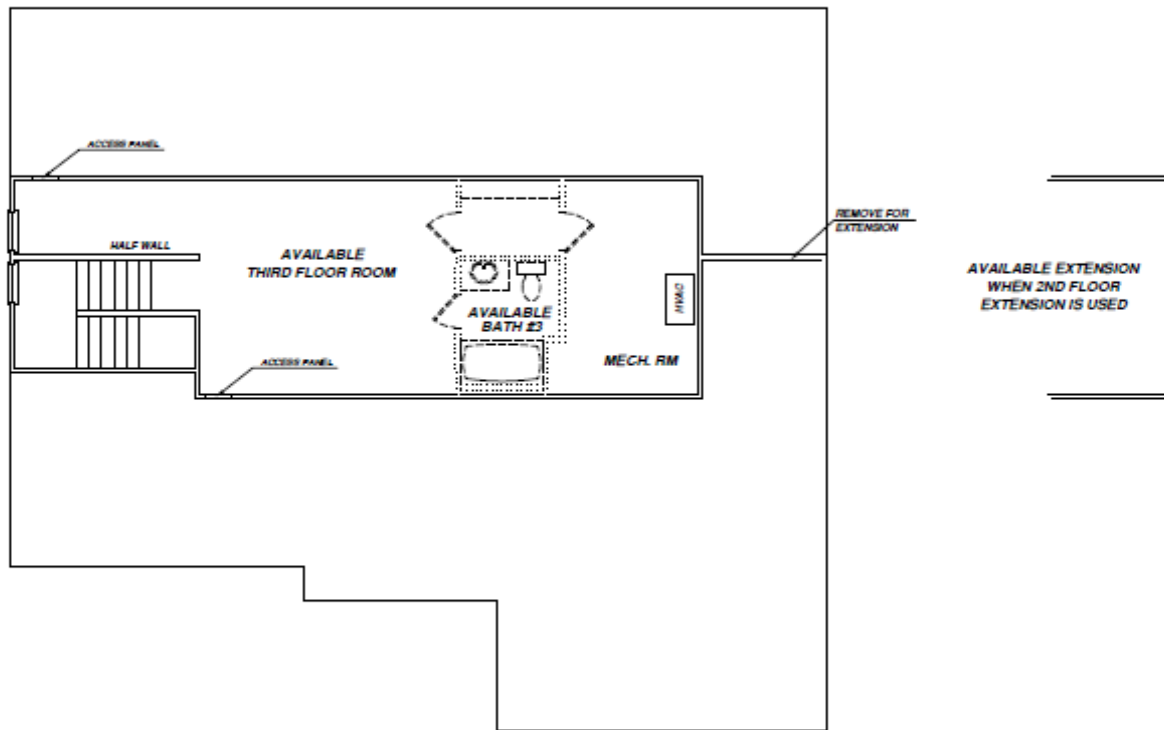


# The Wadsworth I

- 2816 – 3465 square feet
- 4-5 bedrooms
- 2 1/2–4 1/2 baths

## Third Floor Plan

**AVAILABLE THIRD FLOOR ROOM**  
 WHEN 2ND FLOOR EXTENTION IS USED 3RD  
 FLOOR AREA IS INCREASED BY 98 SQ.FT.



**FINISHED / UNFINISHED  
 THIRD FLOOR**

# The Wadsworth I

## Home Elevations

- 2816 – 3465 square feet
- 4-5 bedrooms
- 2 1/2–4 1/2 baths



*Classic Traditional*



*Virginia Vintage*

# The Wadsworth I

- 2816 – 3465 square feet
- 4-5 bedrooms
- 2 1/2–4 1/2 baths

## Home Elevations



*Historic Estate*



*Grand Manor*